

## Surface Mount Power Inductors / SMI TYPE

### FEATURES

- ◆ 125°C maximum temperature operation
- ◆ Ferrite core material
- ◆ Metalized core mounting utilizes board space
- ◆ Frequency range up to 1MHz

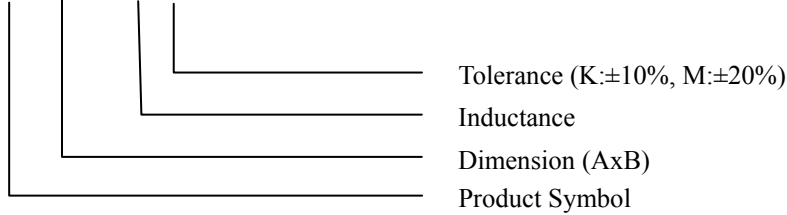
### APPLICATIONS

- ◆ Buck or Boost Inductor
- ◆ Noise filtering and output filter chokes
- ◆ Battery Power, DC-DC converters
- ◆ Notebook power, PDA's, Hand held computers
- ◆ DVD players
- ◆ Cellular phones

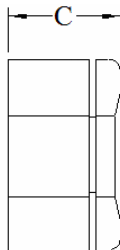
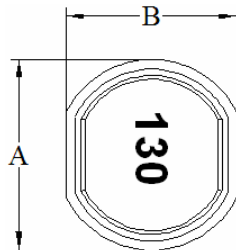


### ORDERING CODE

SMI 1205 - 680 □



### DIMENSIONS (UNIT: mm)



A	12.6 ± 0.3	m/m
B	11.6 ± 0.4	m/m
C	5.8 (MAX)	m/m
		m/m



CORE MASTER ENTERPRISE CO., LTD.

<http://www.coremaster.com.tw>

## Surface Mount Power Inductors / SMI TYPE

ELECTRICAL CHARACTERISTICS FOR SMI 1005			
Part No.	Inductance ( $\mu$ H)	RDC ( $\Omega$ )	IDC (A)
SMI1205-4R7M			
SMI1205-6R8M			
SMI1205-100M			
SMI1205-150M			
SMI1205-220M			
SMI1205-330M			
SMI1205-470M			
SMI1205-680M			
SMI1205-101M			
SMI1205-151M			
SMI1205-221M			
SMI1205-331M			
SMI1205-471M			
SMI1205-681M			
SMI1205-102M			



**CORE MASTER ENTERPRISE CO., LTD.**

<http://www.coremaster.com.tw>